

INTERCHANGEABLE BARREL SYSTEM FROM CYBER-LOCK

NEW

INTRODUCING CL4 PLUS EXTERNAL WAVE KEY DESIGN



CL43P-MWA2-KD barrel



K191-93-MWA-MK master key



K191-92-RWA removal key

Freshware are proud to introduce a new key series to its range. The CL4 PLUS offers added security via a specially carved wave design on a 2.5mm thick key. The wave pattern is on the two opposite sides which enables the profile to have up to 3000 different key changes.

As with the preceding series of CL range of keys, the CL4 PLUS are master keyed and operate with the convenient removable barrel system. The barrel face has a small convex head shape like their counterparts and are silver in finish.

Details of the CL4 PLUS components are as follows:

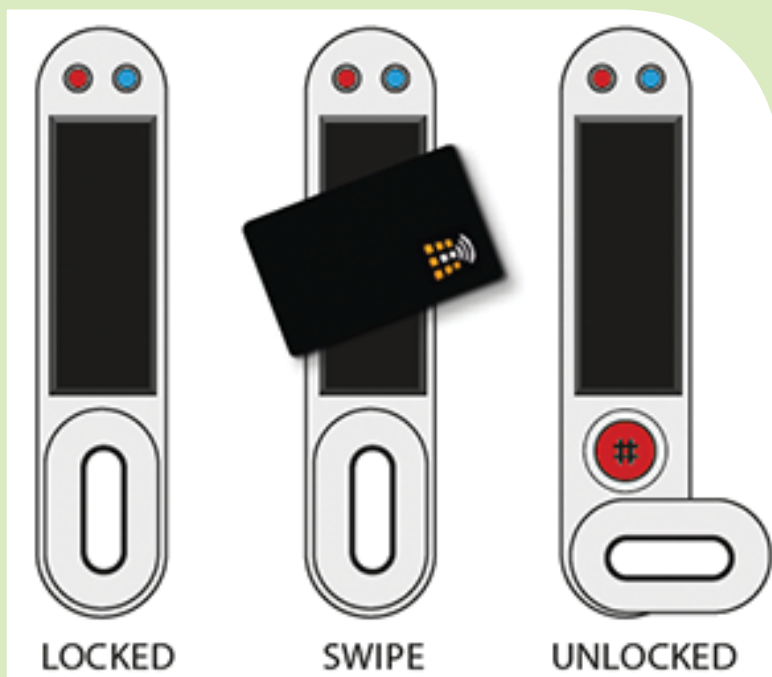
Product code	Keying options	Pack	Outer
CL43P-MWA2-KD	Keyed differ	10	100
CL43P-MWA2-KA001	Keyed alike 001	10	100
CL43P-MWA2-KA002	Keyed alike 002	10	100
CL43P-MWA2-KA003	Keyed alike 003	10	100
K191-93-MWA1-MK	Master key	10	100
K191-92-RWA	Removal key	10	100
K191-91-WA-CL	Uncut key blank	10	100



The KL1050 is a simple to use smart card lock providing access to lockers, cabinets, cupboards etc. The lock is based on the popular KL1000 series. The KL1050 can be used by single or multiple users. It can fit in the place of an existing cam lock or be installed onto any new item that offers that cam lock template. It is battery operated (2 x AAA batteries) that perform up to 15,000 openings.

Features of the KL1050 lock are:

- Private function – suitable for repeated use by the same user(s). Supports up to 50 MIFARE cards.
- Public function – suitable for short term usage by multiple users.
- MIFARE, Ultralite, MIFARE desfire card compatible
- Master user card to enroll and delete users
- Technician card feature available
- Public pairing feature
- Up to 15,000 operations via 2 x AAA batteries
- Battery override feature
- Easy to fit and program
- Can be fitted vertically or horizontally
- All parts, fixings and templates included
- Silver finish only



Product	Description
KL1050-RFID	Codelock KL1050 Smart code lock
MIFARE-1KCARD	MIFARE Smart card pk 10



The Carbine CMVL window stop has been designed to meet with the new BCA Building Codes of Australia in relation to comply with the “Falling from Windows” regulations. These new regulations require window safety devices to be installed on all above ground floor windows to prevent children from windows or balconies. The use of these devices and or locks becomes law by March 2018.

The Carbine CMVL window stop is an alternative version to the Carbine G70 window stop. The CMVL is for use on sliding windows. It has a push operation which positively engages a locating pin into the sliding window track, thus preventing it from being opened. A standard C4 type key is used just as you would in any lock to then disengage the pin. Available in one finish only of black.

The CMVL Window Stop complies due to its sole function being as a window opening limiting product only.

Other features are:

- Modern design
- Easy installation, fits in seconds with no screw fixing required
- The patented C4 wafer barrel allows rekeying options if needed
- Supplied with drilling template and packer

Important Notes:

To comply with regulations & provide adequate security, all locks must:

- Be installed per the instructions included with the product
- Be locked & have all keys removed

**Suits
BCA codes**

Product	Description	Finish	Packaging
CMVL-BL-C4-KA1	Carbine CMVL window stop	Black	Boxed
CMVL-BL-C4-BP1	Carbine CMVL window stop	Black	Display pack

LEGGE PACIFIC

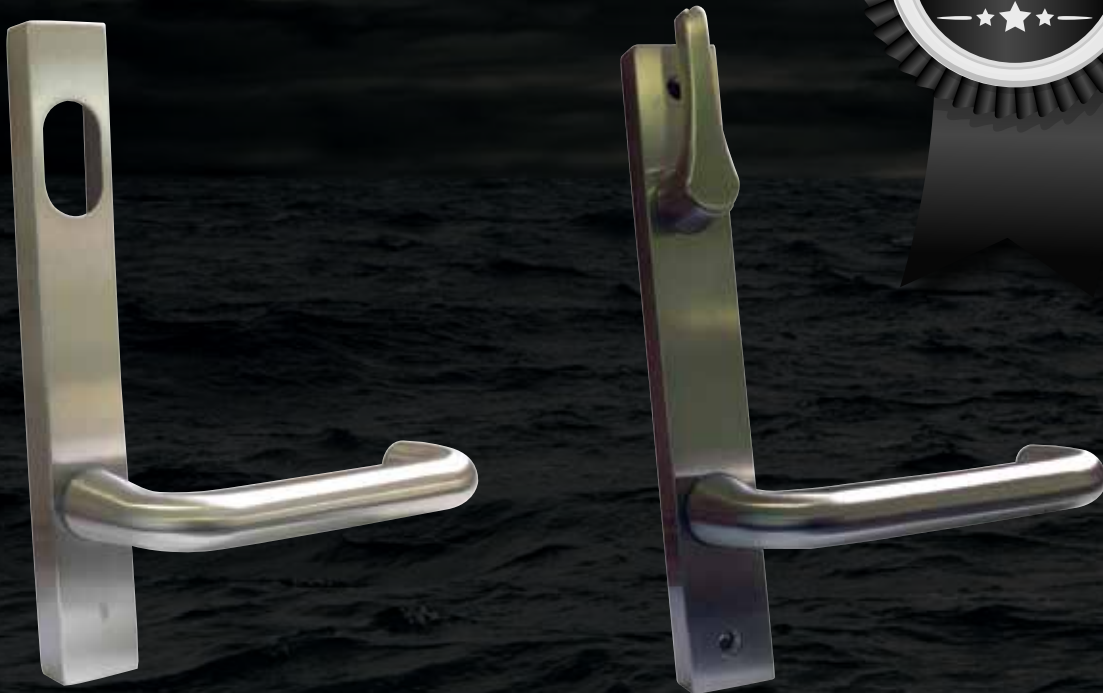
Marine R Series

Narrow Furniture

The Legge range of stainless steel door furniture is designed to use in commercial applications. The Marine R Series Grade is a range of narrow furniture is constructed from marine grade 316 stainless steel. This makes it ideal for coastal environments. They are suitable for both external & internal applications.

Other features include:

- Fire rated to 4 hours
- Suits door thickness from 32mm – 55mm
- Offers back to back fitting, with external plate concealed fixing
- Retrofits with Lockwood 4800 narrow series furniture
- 30 year warranty



Product	Description - Function	Application
L5300-29SSS	Cylinder hole and lever	External
L5304-29SSS	Emergency release with lever	External
L5305-29SSS	Plain with lever	External
L5310SSS	Cylinder hole only no lever	External
L5315SSS	Plain plate only no lever	External
L5301-29SSS	Cylinder hole and lever	Internal
L5303-29SSS	Turn with lever	Internal
L5311SSS	Cylinder hole only no lever	Internal
L5313SSS	Turn only no lever	Internal
L5316SSS	Plain plate only no lever	Internal
L5306-29SSS	Plain with lever	Internal
L5353-29LSSS	Disabled turn with left hand lever	Internal
L5353-29RSSS	Disabled turn with right hand lever	Internal

LEGGE PACIFIC

700 Marine Series

The Legge range of stainless steel door furniture is designed to use in commercial applications. The 700 Series Marine Grade furniture is constructed from marine grade 316 stainless steel. This makes it ideal for coastal environments. They are suitable for both external & internal applications.

Other features include:

- Fire rated to 4 hours
- Offers back to back fitting, with external plate concealed fixing
- Retrofits with Lockwood 1800 series furniture
- 30 year warranty



**Retrofits with Lockwood
1800 series furniture**

Product	Description - Function	Application
LA702SSS	Cylinder hole and lever	External
LA703SSS	Plain with lever	External
LA704SSS	Emergency release with lever	External
LA704INDSSS	Indicating emergency release with lever	External
LA706SSS	Cylinder hole only no lever	External
L708SSS	Plain plate only no lever	External
LA711SSS	Cylinder hole and lever	Internal
LA712SSS	Plain with lever	Internal
LA714SSS	Turn with lever	Internal
L716SSS	Plain plate only no lever	Internal
LA754LSSS	Accessible turn bar with left hand lever	Internal
LA754RSSS	Accessible turn bar with right hand lever	Internal
LA754LINDSSS	Indicating accessible turn bar with left hand lever	Internal
LA754RINDSSS	Indicating accessible turn bar with right hand lever	Internal



THE NEXT GENERATION IN LOCKING

CCL Cupboard Locks **NEW**

The Carbine Cupboard lock range just got even better.

New CCL-GD1 glass door kit for the Carbine CCL-1 cupboard lock

CCL-GD1-NL-SS

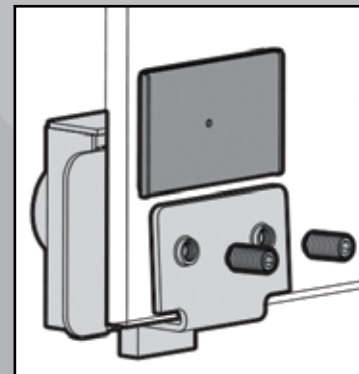
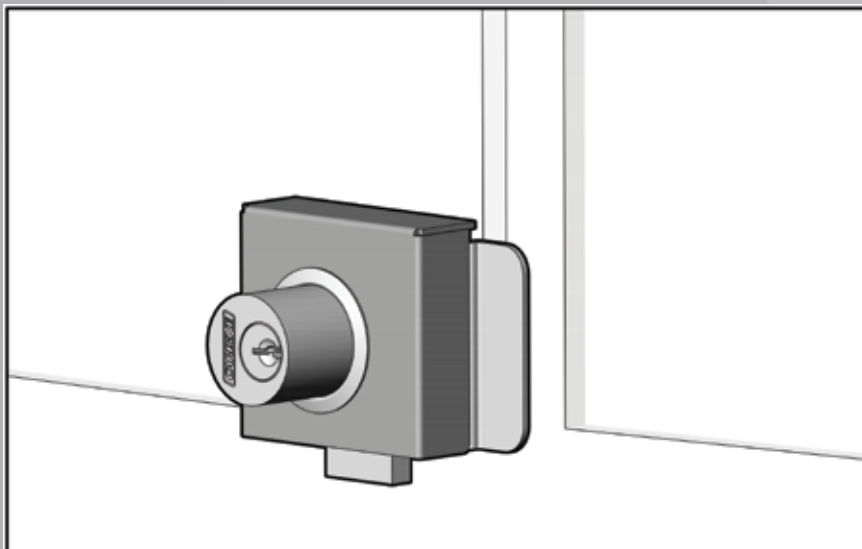
*Not including CCL-1 cupboard lock

Product	Description
CCL-GD1-NL-SS	Carbine glass door lock kit

- Suitable for single & double door glass cabinets
- Double glass doors must have the double door plate installed
- Utilises a Carbine CCL Cardboard lock with all its functions
- Utilises a 530 cylinder
- Can accept restricted keying systems
- Can be installed onto 4mm to 8mm glass thickness
- Made from high quality brush stainless steel
- Can be installed on left & right hand opening doors
- Can be used to secure the door at the bottom or the top
- Simple to install, especially with the easy to handle back plate



CCL-GD1-NL-SS



CCL-GD1-NL-SS
Fitted on glass door



Specialty Cabinet Locks

Radial Pin Camlocks



We have introduced a new and improved series of radial pin camlocks, these will ultimately replace our current APL9390 series

The new camlocks feature:

- Improved quality housing & barrel system
- 7 pin locking

Radial Pin 11mm Cam Locks

Features include:

- Has 11mm long body and fixed with a locking nut
- 7 pin cylinder
- Key removable in one position (12 o'clock) only
- Non master keyed
- Available keyed to differ and keyed alike



Radial Pin 16mm Cam Locks

Features include:

- Has 16mm long body and fixed with a locking nut
- Key removable in one position (12 o'clock) only
- Non master keyed
- Available keyed to differ and keyed alike



11mm models

Product code	Keying
C501-0KD	Keyed to differ
C501-0KA1	Keyed alike 001

16mm models

Product code	Keying
C501-1KD	Keyed to differ
C501-1KA1	Keyed alike 001
C501-1KA2	Keyed alike 002
C501-1KA3	Keyed alike 003

Radial Pin 21mm Cam Locks

Features include:

- Has 21mm long body and fixed with a locking nut
- Supplied with a pronged fixing washer for timber fitting applications
- Key removable in one position (12 o'clock)
- Non master keyed
- Available keyed to differ and keyed alike
- Key removable in two positions (12 & 3 o'clock) model C502-2



Radial Pin 25mm Cam Locks

Features include:

- Has 25mm long body and fixed with a locking nut
- Supplied with a pronged fixing washer for timber fitting applications
- Key removable in one position (12 o'clock) only
- Non master keyed
- Available keyed to differ and keyed alike



21mm models

Product code	Keying
C502-1KD	Keyed to differ
C502-1KA1	Keyed alike 001
C502-1KA2	Keyed alike 002
C502-2KA1	Two position - Keyed alike 001

25mm models

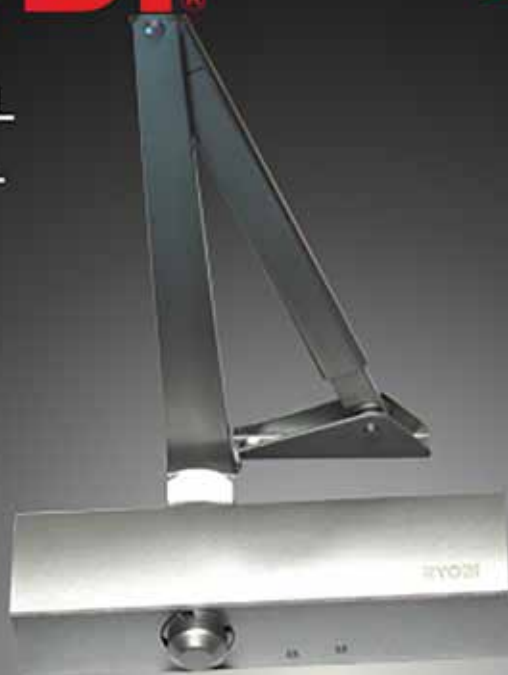
Product code	Keying
C503-1KD	Keyed to differ
C503-1KA1	Keyed alike 001

RYOBI

Overhead door closer D-1200 SERIES

NEW

D1200BCUNIVSIL
D1200BCUNIVBL
D1200BCTS
D1200BCTB



- + Compact body and smooth operation
- + Optional backcheck function
- + Support of door sizes 2,3,4 with changes to mounting position
- + Non-handed
- + Available in silver and black finishes
- + Universal fitting or slide rail

Product code	Description	Function	Finish
D1200BCUNIVSIL	Standard model closer	Size 2-4	Silver
D1200BCUNIVBL	Standard model closer	Size 2-4	Black
D1200BCTS	Slide track model closer	Size 2-4	Silver
D1200BCTB	Slide track model closer	Size 2-4	Black